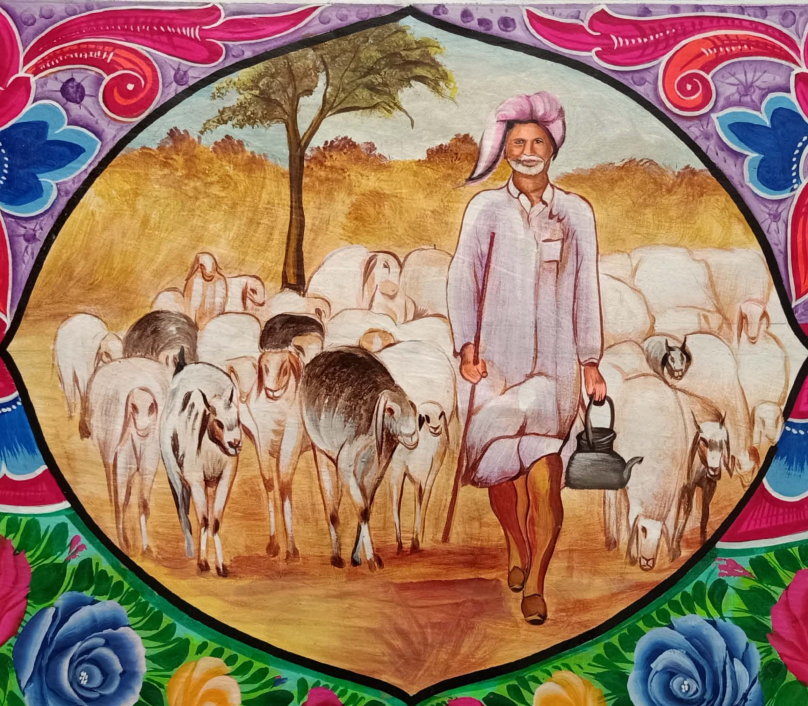


Dementia Dekh Bhal Scotland



Dementia in Black Asian Minority Ethnic communities



Dementia affects all communities, but some communities are affected more profoundly because there is little or no awareness of dementia.

Dementia is expected to increase seven to eight-fold in BAME communities.

Some people may experience memory loss, difficulties with communicating, problems with being aware of time, day, place...

BAME populations may be more likely to be affected by vascular dementia due to lifestyle choices and having a stroke.

A lack of awareness of dementia can mean BAME carers and people living with dementia are more likely to ask for help and support when they are at a crisis point rather than when dementia symptoms or behaviours are mild.



BAME people affected by dementia may have different understandings associated with dementia, such as witchcraft, black magic or possession by spirits/jinns.



For more information, please visit www.tide.uk.net

Artwork painted by Ali Salman of Phool Patti - Pakistan